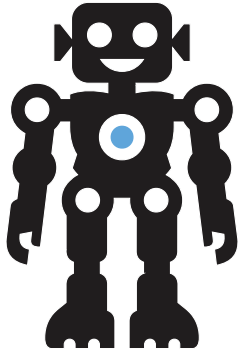
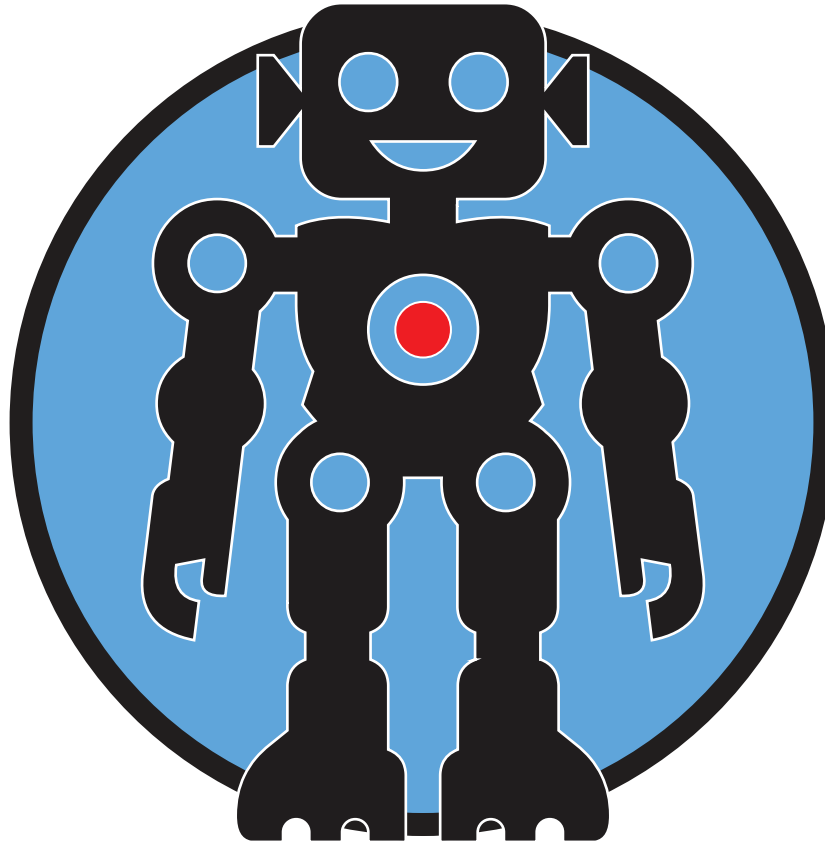
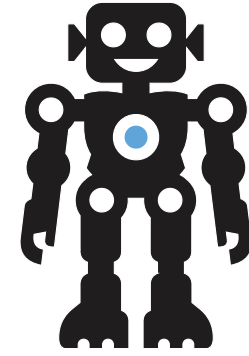


LEAD BY EXAMPLE



ROBOTICS LAB



ROBOTICS LAB



BELIEVE IN YOU

YOUR OBJECTIVE IS TO KEEP YOUR ROBOTS SAFELY MOVING.

CONTROL ROBOTS USING A REMOTE CONTROL

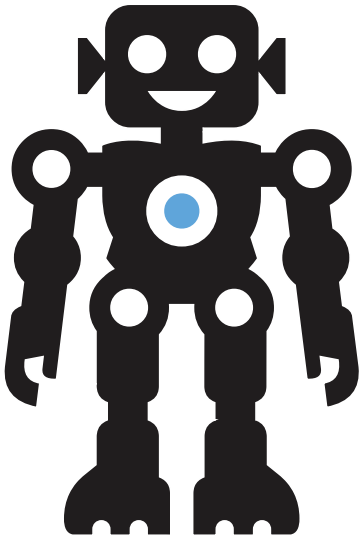
KEEP THEM SAFE BY AVOIDING OBJECTS & OTHER ROBOTS

LEAD WITH QUICK THINKING AND GOOD DECISIONS

WE'LL START WITH 1 ROBOT PER REMOTE AND INCREASE THE CHALLENGE BY ADDING ADDITIONAL ROBOTS.



KEEP YOUR ROBOT SAFE BY TAPPING THEM ON THE RIGHT AND LEFT SHOULDERS TO SIGNAL DIRECTION CHANGE.



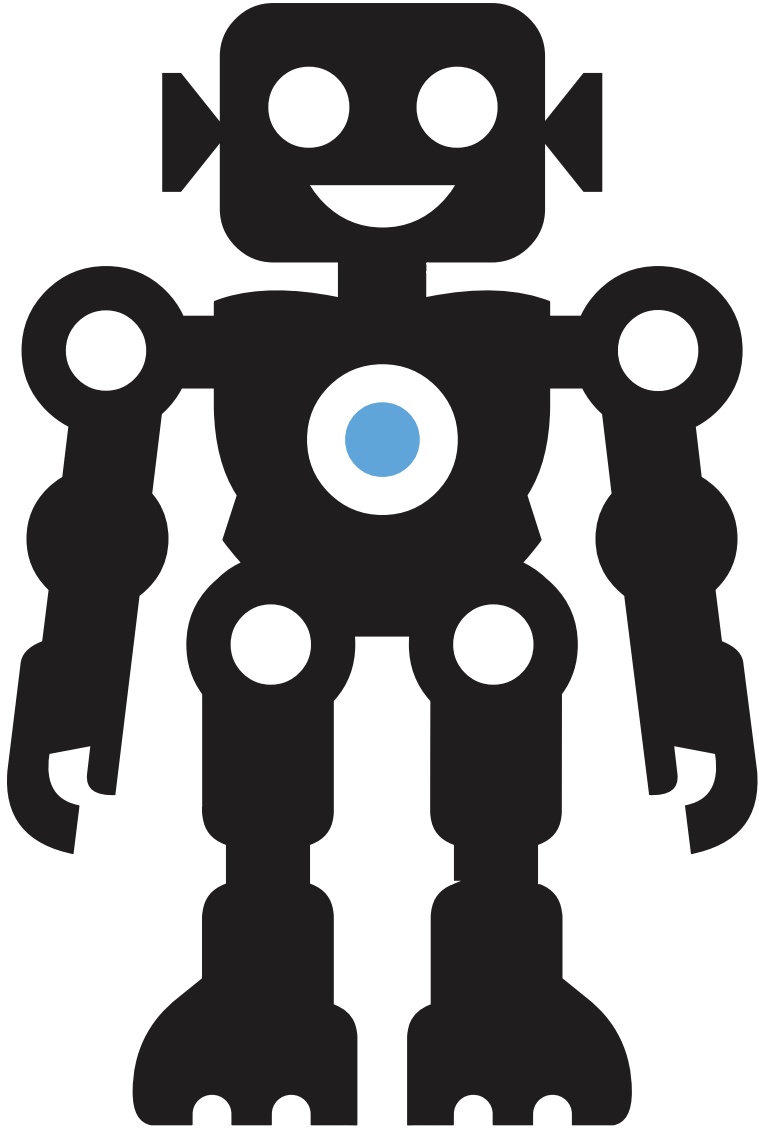
- ON THE START SIGNAL ALL ROBOTS MARCH FORWARD
- ROBOTS ONLY CHANGE DIRECTION WHEN SIGNED
- ROBOTS ONLY STOP MARCHING ON THE STOP SIGNAL OR WITHIN 3 FEET OF A DANGEROUS COLLISION

ROBOTS BECOME DISABLED AND CANNOT RESTART IF THEY ARE FORCED TO STOP FOR MORE THAN 5 SECONDS.

Inspired by the activity Robotics Lab by OPENPhysEd.org.

LEAD BY EXAMPLE

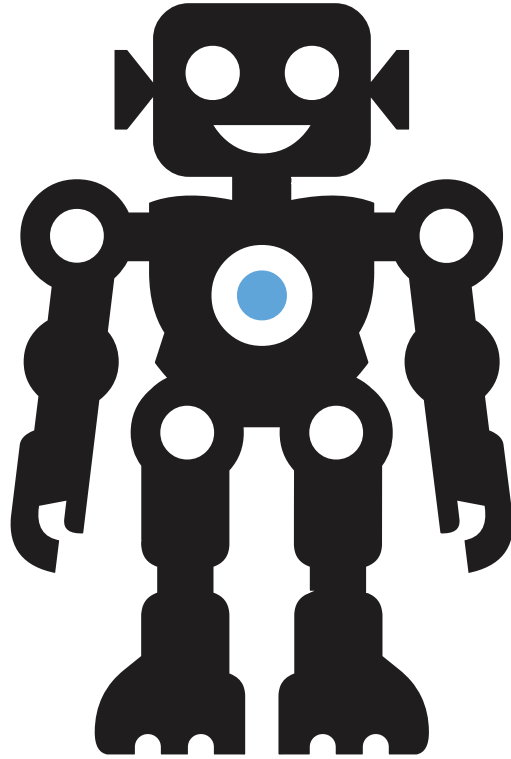
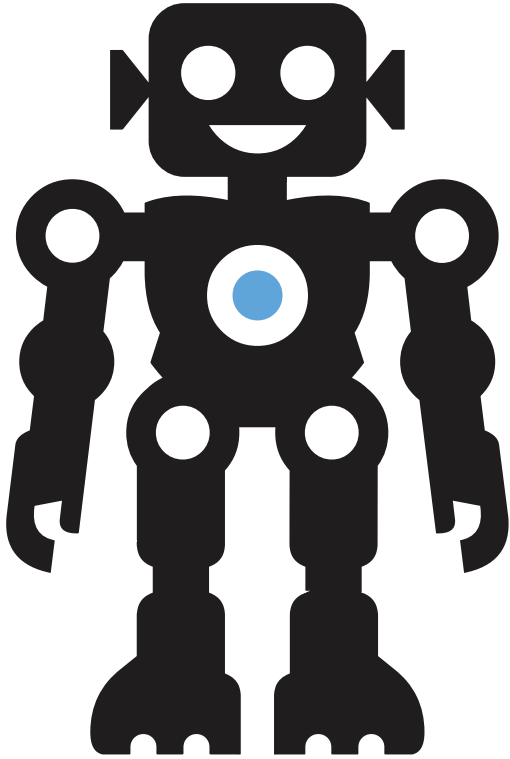
LEVEL ONE



BELIEVE IN YOU

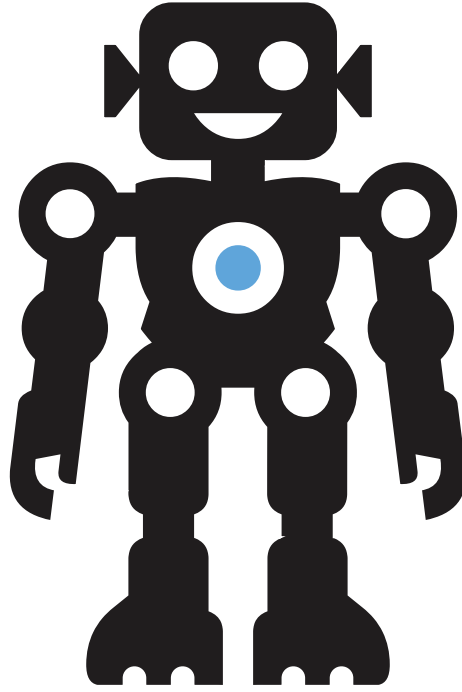
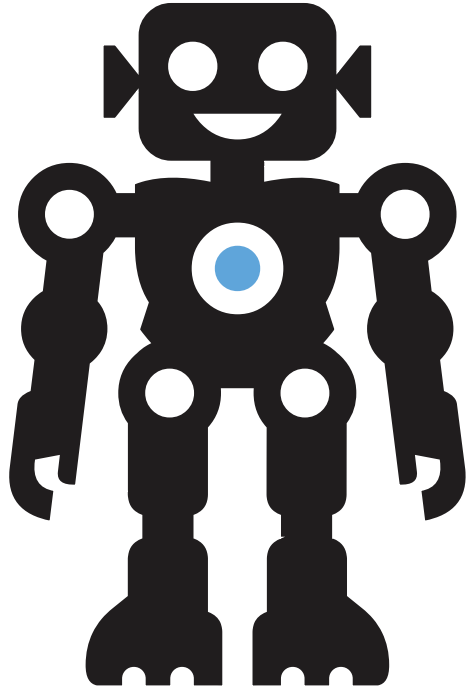
LEAD BY EXAMPLE

LEVEL TWO

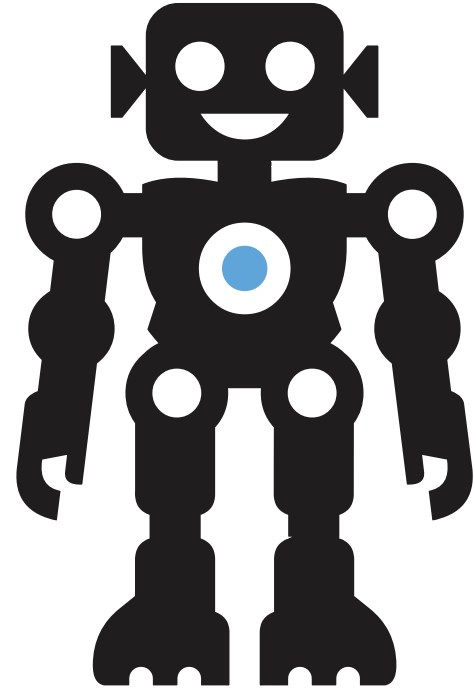


BELIEVE IN YOU

LEAD BY EXAMPLE



LEVEL THREE



BELIEVE IN YOU

POWERFUL

(Adjective)

Having influence over people's feelings, thoughts, and/or behavior.

Describe a time in which you had a powerful impact on someone's feelings.

What did you do to make that impact?

Why was that action so powerful?

PURPOSE

(Noun)

The reason that something is done or has been created.
A feeling of determination.

Think about a group, team, or club that is important to you. This could even be a peer group.
What is the purpose of that organization?
How do you contribute to that purpose?

RESPONSIBILITY

(Noun)

An obligation to do something of consequence or to care for someone.

Name one of your responsibilities.

Why is this responsibility important to you?

What are 2 ways that you consistently fulfill your obligation?